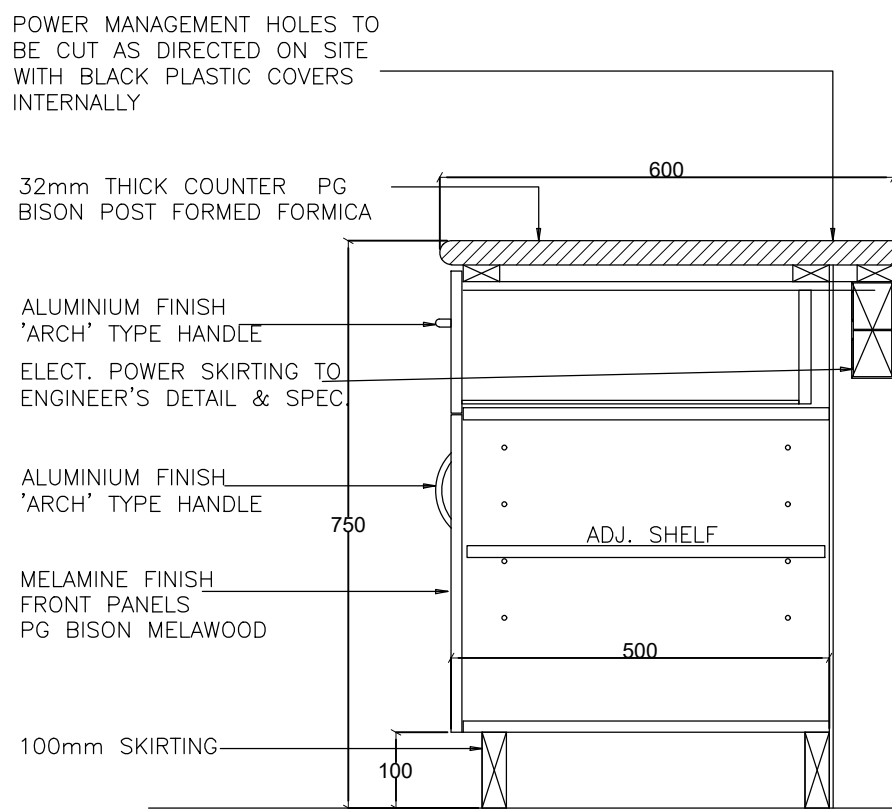
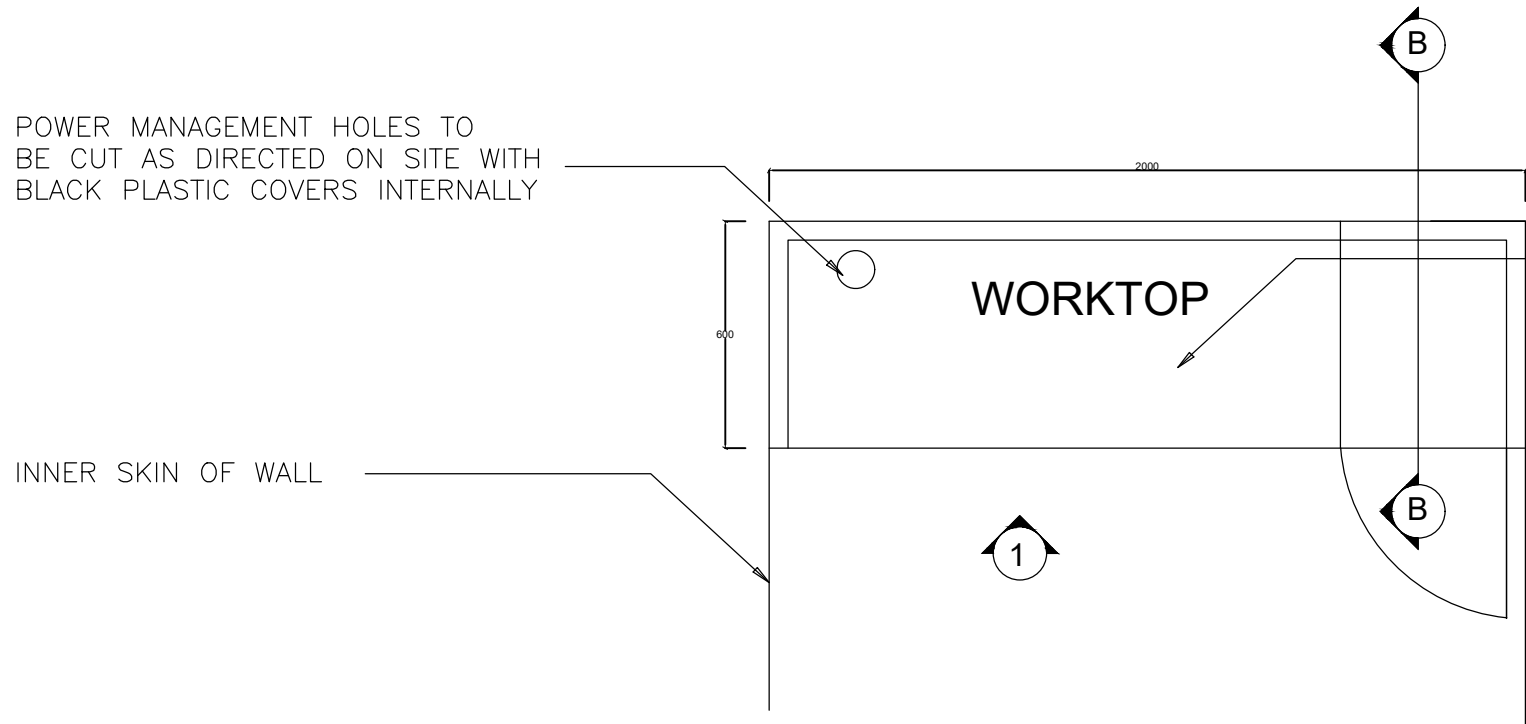


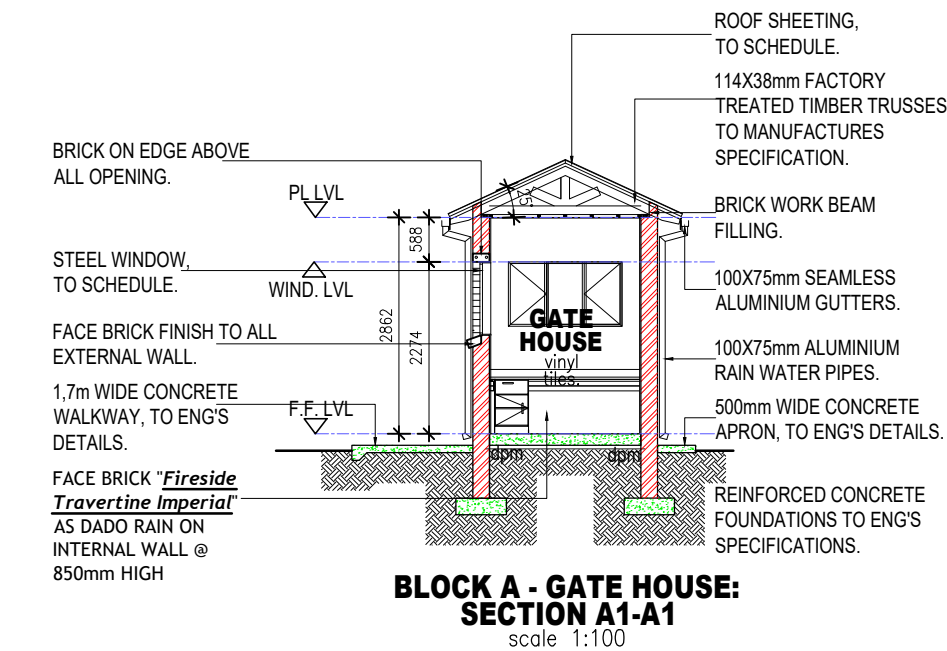
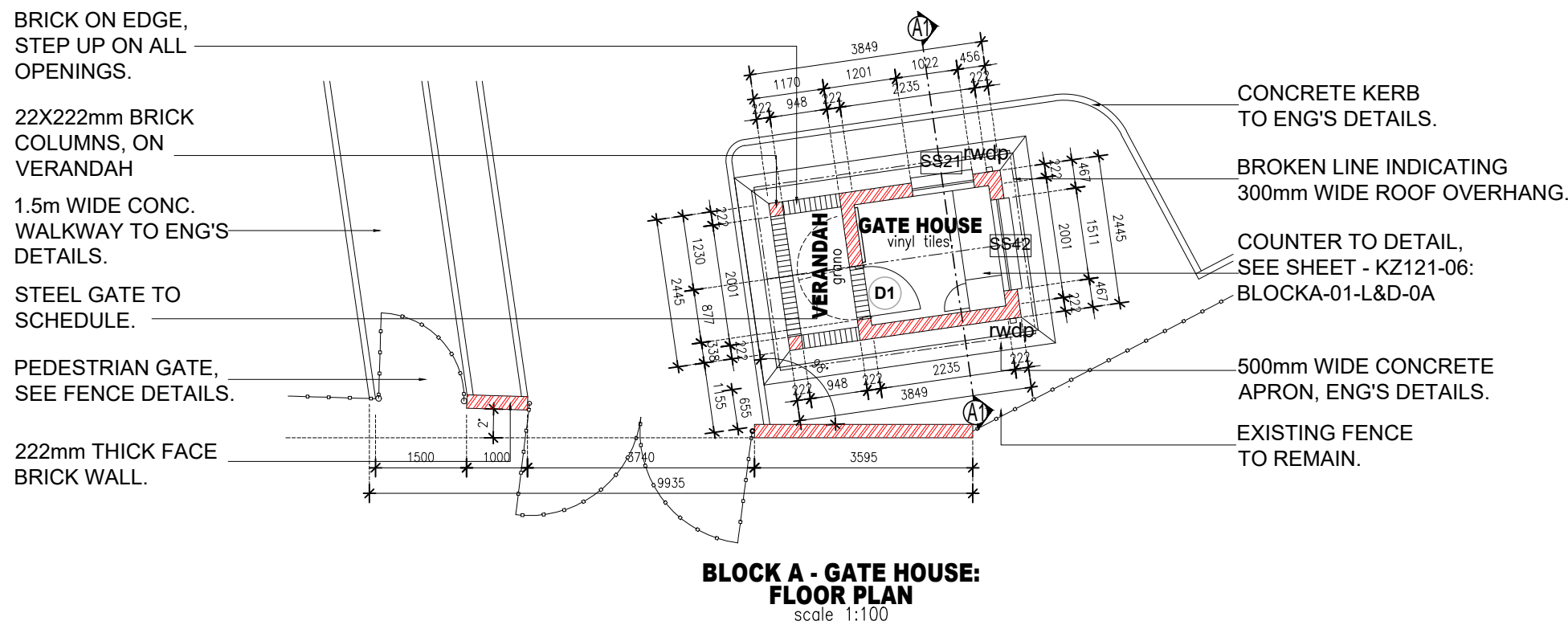
Window No.:	SS21	Window No.:	SS42	Door No.:	01	Gate no.:	01
FRAME		FRAME		FRAME FINISH		FRAME FINISH	
GLASS		GLASS		DOOR		DOOR	
FITTINGS		FITTINGS		DOOR FINISH		DOOR FINISH	
BURGLAR BARS		BURGLAR BARS		FURNITURE		FURNITURE	
FINISH		FINISH		QUANTITY		QUANTITY	
QUANTITY		QUANTITY					
LOCATION		LOCATION					



DETAIL B - SECTION THRU' SHELVE
Scale 1:10



PLAN
Scale 1:20



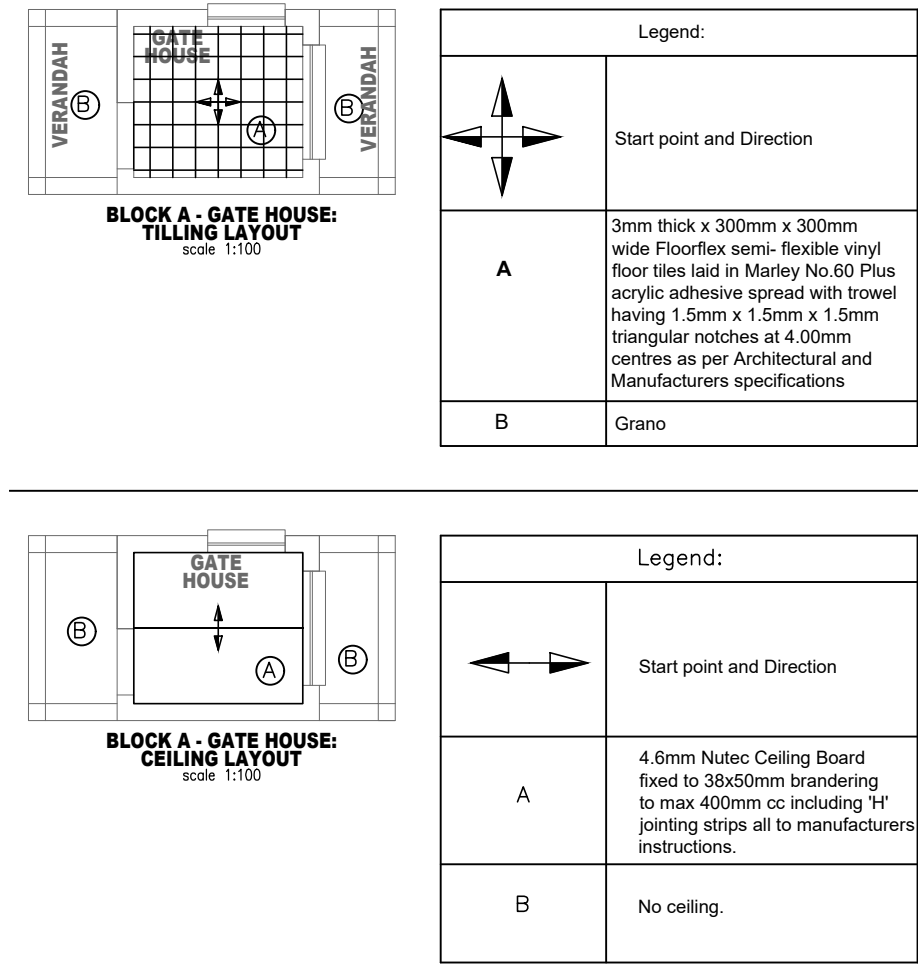
ELEVATION 1
Scale 1:20

Drawers of Med creame 18mm Bison Dura with 32mm hardboard bottom in 10mm grooves in sides and front. Front cover panel of 18mm Bison Dura painted as specified for doors.

500mm drawer slide rails (bottom mount runner) as grass furniture fittings code 011500 type 4015500mm long handles as per cupboard doors.

Drawers of Med creame 18mm Bison Dura with 32mm hardboard bottom in 10mm grooves in sides and front. Front cover panel of 18mm Bison Dura painted as specified for doors.

500mm drawer slide rails (bottom mount runner) as grass furniture fittings code 011500 type 4015500mm long handles as per cupboard doors.



ceiling lvl

General Notes

Ridge Capping:
AG150 G560 zincalume ridge capping with broad flute closures to suit roof profile

Roof Covering:
Chromadek (10.5) corrugated 0.8mm thick ISQ230, Z275 spelter galvanised steel roof sheeting with chromadek finish to one side and protective primer coating on reverse side, "SKY BLUE COLOUR", fixed to timber purlins (wind-load to be taken into account). Matching chromadek purpose made barge flashing on all gables to detail

Roof Membrane:
One layer of 250 micron Consol Plastics Brikgrid DPC embossed damp proof course

Roof and wall Sasilation:
"Sasilation 420" heavy industrial grade aluminium foil based insulation

Trusses:
114x 38mm Timber roof rafters by specialist spaced @ min. 11.5mmcc. Size timbers to be confirmed by eng. Pitch 25°

Paint to exposed Trusses :
Two coats "ABE provonite" paint on exposed roof timbers and wall plates.

Internal purlins:
Intermediate purlins at equal centres with ridge and end purlins as per roof manufacturer's spec. (wind-loading to be considered)

Ceilings: (Where Applicable)
4.6mm Nutec ceiling ceilings fixed to 38x50mm brandering at max 400cc including 'H' profile jointing strips all to manufacturers instructions.

Air-bricks:
2 Terracotta Air-bricks

and
4 Terracotta air-bricks spaced between trusses.

Barge Boards:
Fibre Cement socketless barge boards, with no paint.

Windows:
Galvinised steel windows to window schedule detail and specification.

Water Protection on Windows:
One layer of 375 micron green polyethylene waterproof sheeting (SANS 952-1985 type C) sealed at laps with PVC self-adhe

Gutters:
Seamless 100x75mm aluminium ogee gutter with baked enamel finish fixed with concealed brackets - all to suppliers specification.

RWDP's:
100x75mm Aluminium rainwater pipes, 1 No. to discharge into water Channel.

External Walls:
Face Brick 30-40MPa Fireside Travertine Imperial and, MAIZE TRAVERTINE FBX size 222x 106 x 73mm, bedded and jointed in Class II mortar and pointed with recessed vertical and recessed horizontal joints, suitable for exposure zones 1-2.

Internal Walls:
6-8mm please to all internal walls

Prepare surfaces and remove all loose material, apply one coat Wall and All Pure Acrylic thinned 20% and one coat Wall and All Pure Acrylic paint or equal and approved:

and
Face brick on edge lintel, above all wind. & doors.

and
face brick on edge to external sills.

Floor Slabs:
See civil engineering drawings.

Floor Membrane:
Sikaflex-PROZHP polyurethane joint sealant filling to 6 x 30mm deep saw cut in top of concrete surface bed, including neatly pointing

Floor Finish:
Tiles - 3mm thick x 300mm x 300mm wide Floorflex semi- flexible vinyl floor tiles laid in Marley No.60 Plus acrylic adhesive spread with trowel having 1.5mm x 1.5mm x 1.5mm triangular notches at 4.00mm centres as per Architectural and Manufacturers specifications

Kirtings:
19 x 76mm Skirtings with 19mm quadrant bead, plugged

Softboard:
10mm impregnated softboard between brickwork and concrete

Concrete Channels:
In-situ concrete water channels to detail. (See Civil Drawings)

REVISIONS

	DATE	DESCRIPTION
0A	27 AUG. 22	ISSUED FOR TENDER

CLIENT:



IMPLEMENTING AGENT:



PRINCIPAL AGENT:



PROJECT NAME & CLIENT INFORMATION KZN-DOE/DBSA - STORM DAMAGED PROGRAMME.

SECTION / BLOCK EXHAPHOZINI PS - BLOCK A: GATE HOUSE

TITLE GENERAL LAYOUTS & DETAILS

DRAWING DESCRIPTION PLAN, SECTION, ELEVATION, SPECS, SCHEDULES and JOINERY.

SCALE	AS SHOWN		
DESIGNED NM	DATE AUG. 2022	PrEng No.	SIGN.:
DRAWN NM	DATE AUG. 2022	SACAP NO.	SIGN.:
APPROVED NM	DATE AUG. 2022	DRAWN: NM	SIGN.:
DRAWING NUMBER: KZN.DoE/ DBSA-BPP-EPS-A-L&S-002-0A		REVISION 0A	

PREPARED BY:



FOR TENDER "ONLY"